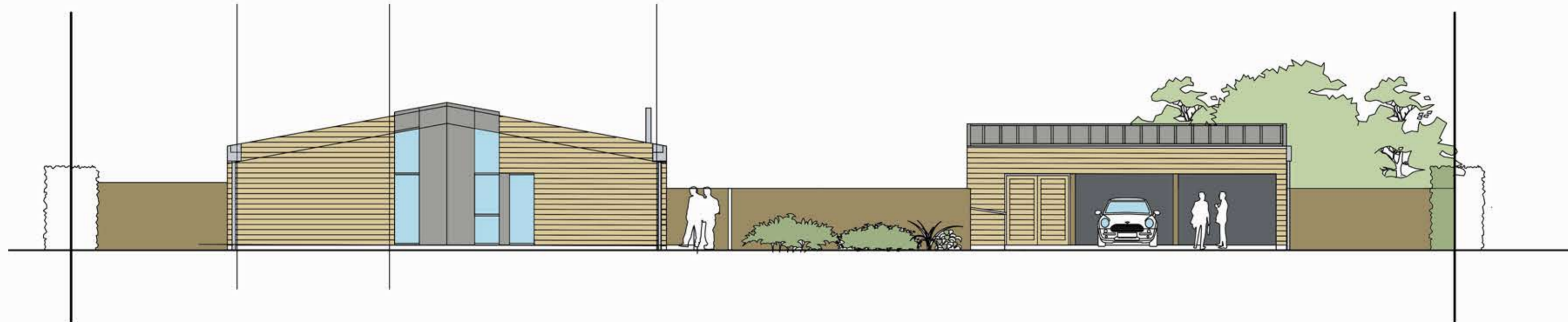
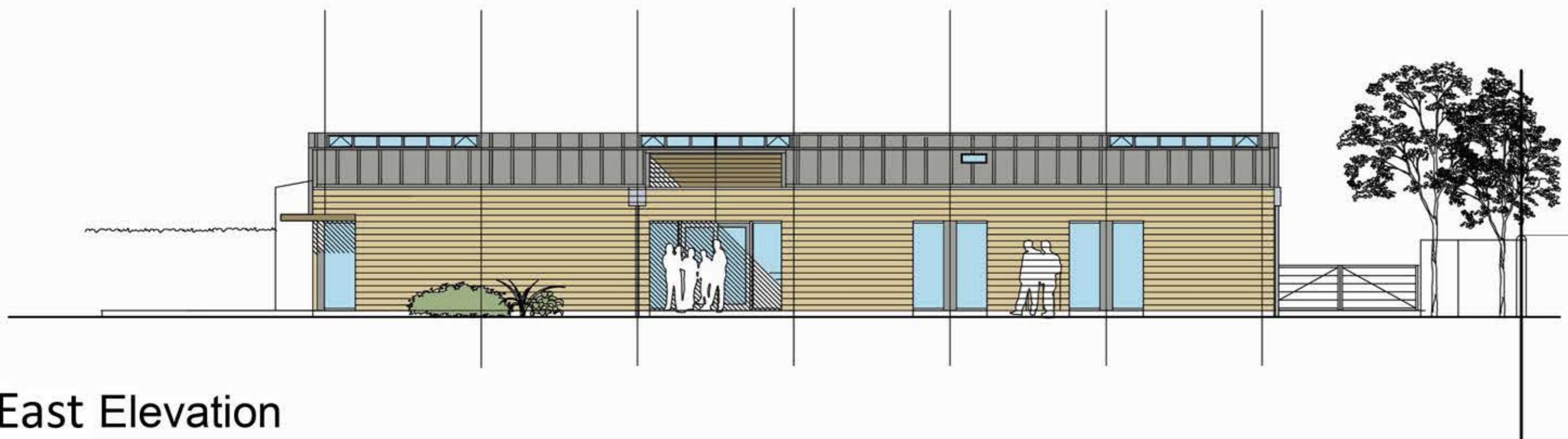


South elevation



North Elevation



East Elevation

Material notes:

1. Horizontal Siberian Larch cladding, natural finish with Silva Sioo clear wood protection, fixed to vertical battens on breather membrane, over insulated timber frame
2. Eternit Equitone 'pictura' smooth finish feature cladding panels
3. Brise-soleil frames and pergola beams of hardwood slats, natural varnish finish
4. Slavona Progression o.e. A-rated passivHaus certified timber windows, triple glazed [ $U < 0.68W/m^2K$ ]; Sadolin Superdec o.e. opaque wood stain and powder-coated aluminium sill, both in colour RAL7016 Anthracite Grey
5. Lacuna passivHaus timber sliding/folding doors, finish to match windows
6. Euroclad Vieozinc o.e. zinc-effect aluminium roofing with standing seams, over warm roof construction
7. Alumasc flush-joint circular aluminium rwdp's with silver metallic finish
8. Pre-formed aluminium secret parapet gutter with matching Vieozinc flashings
9. Velux Integra GGL306630/CK06 roof-light with solar-powered opening and extra low-energy glass
10. Vitral A98 o.e. thermally broken aluminium roof-lights with solar-powered electric opening mechanism and integral blinds [ $U < 0.7W/m^2K$ ]
11. Solar thermal evacuated tube panels with roof-mounting kit, for hot water supply
12. 150mm  $\varnothing$  twin-wall insulated stainless-steel flue for log-burner, silver metallic finish
13. Photo-voltaic solar panels with roof-mounting kit
14. Zinc-effect cladding, as item 6

Revisions:

A Revisions to windows	12.09.15
B Issue for planning	05.09.15
C Amended to planning comments; A2 format/3 views	04-11-15

**Jon Boon Architect**

Client: Mr N Dickinson

Project: Church Farm Barn  
Weston Longville  
Norfolk NR9 5JY

Drawing: Elevations  
Planning amendments

1:100 (A2) | 31-10-15 | 14-011/108C